

sobota, 28 grudnia 2019

ABBVIE INC.

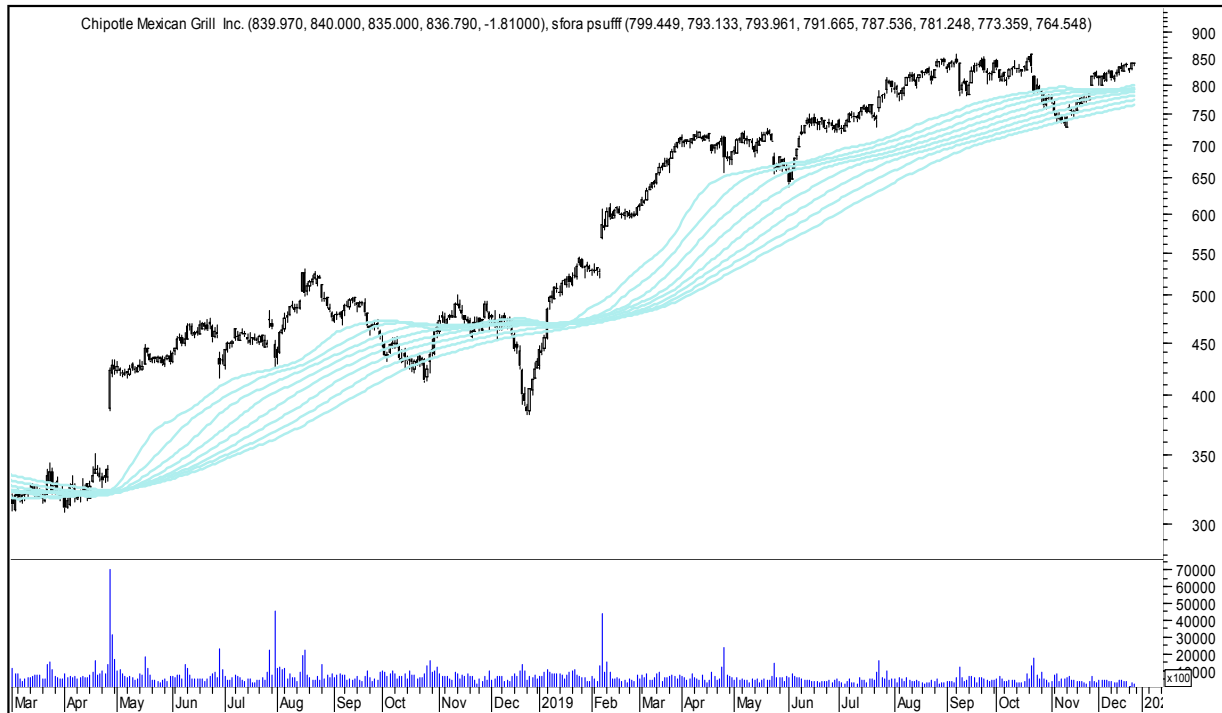


APPLIED MATERIALS INC.

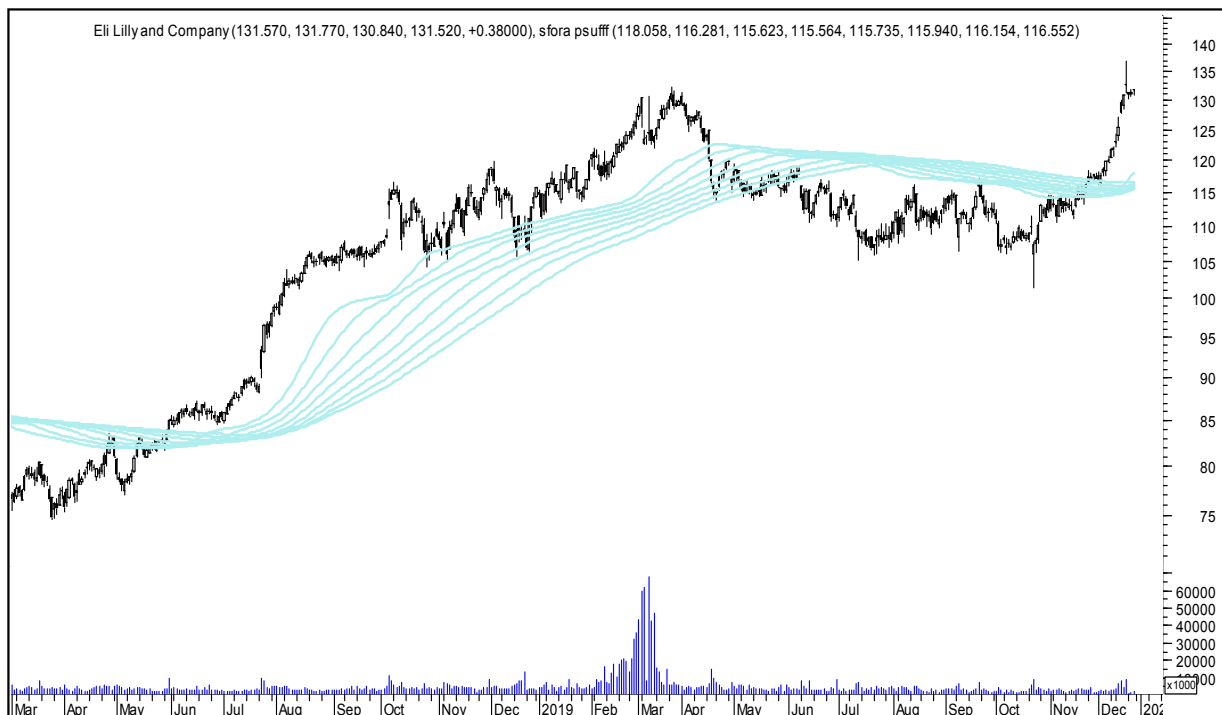


sobota, 28 grudnia 2019

CHIPOTLE MEXICAN GRILL INC.



ELI LILLY AND COMPANY

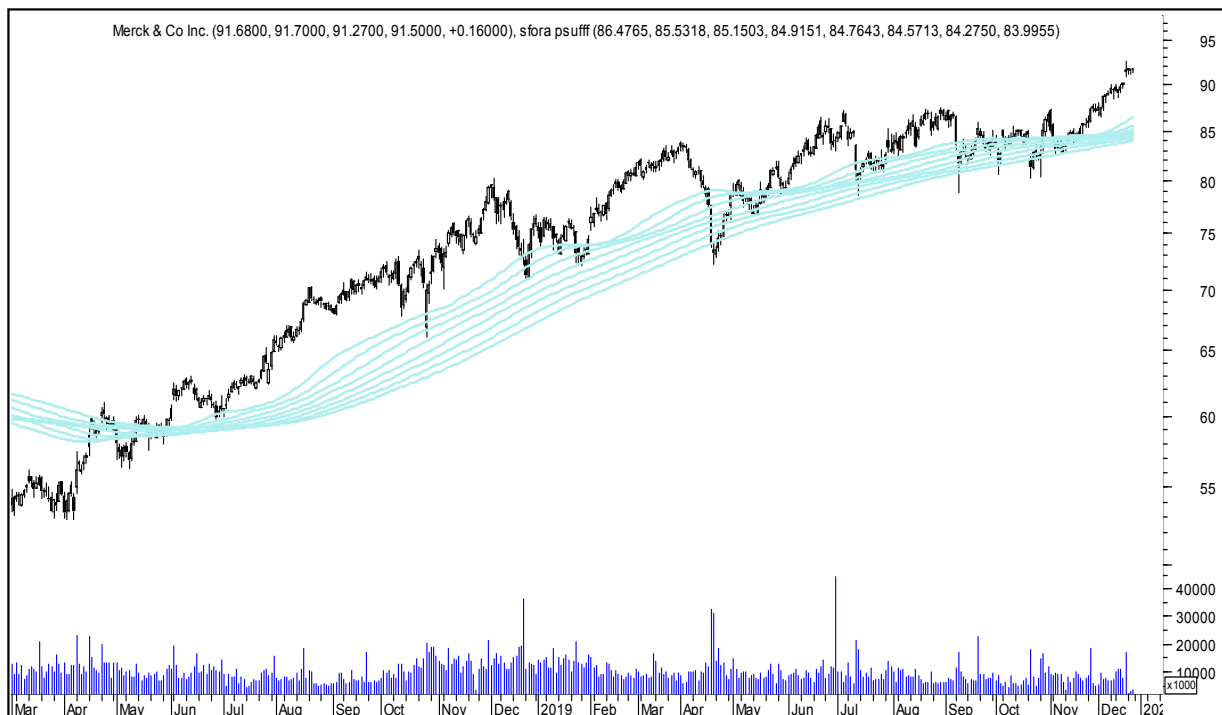


sobota, 28 grudnia 2019

HUMANA INC.



MERCK & CO INC.



sobota, 28 grudnia 2019

PROCTER & GAMBLE CO.



BERKSHIRE HATHAWAY INC.

